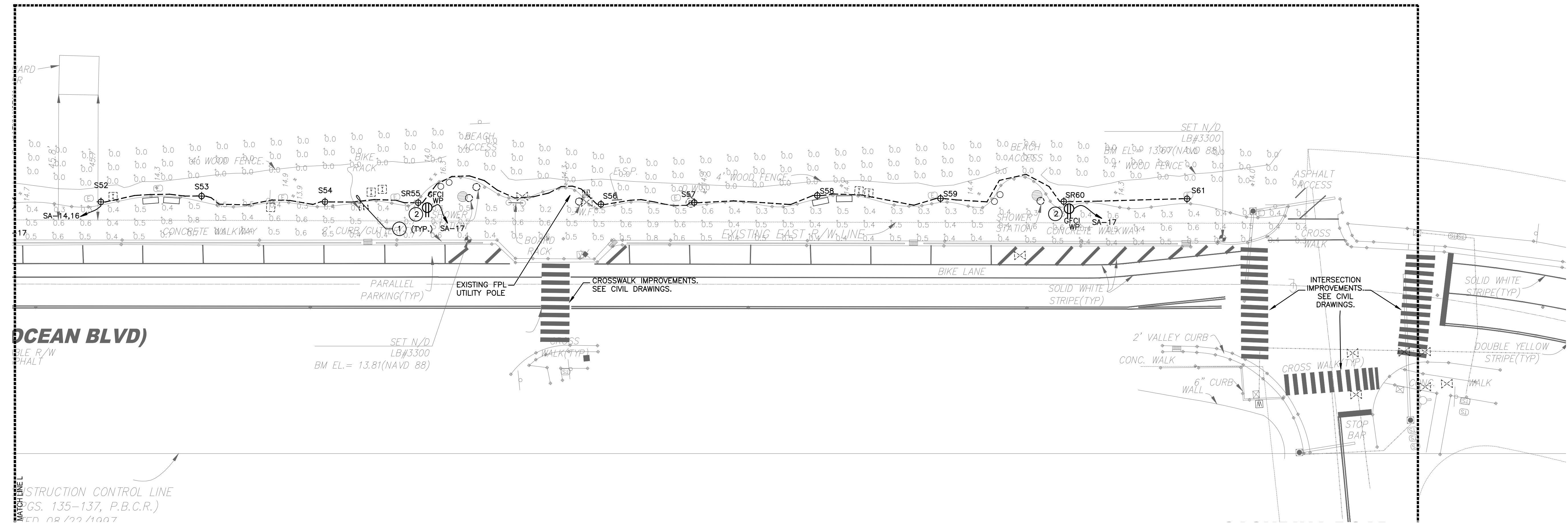
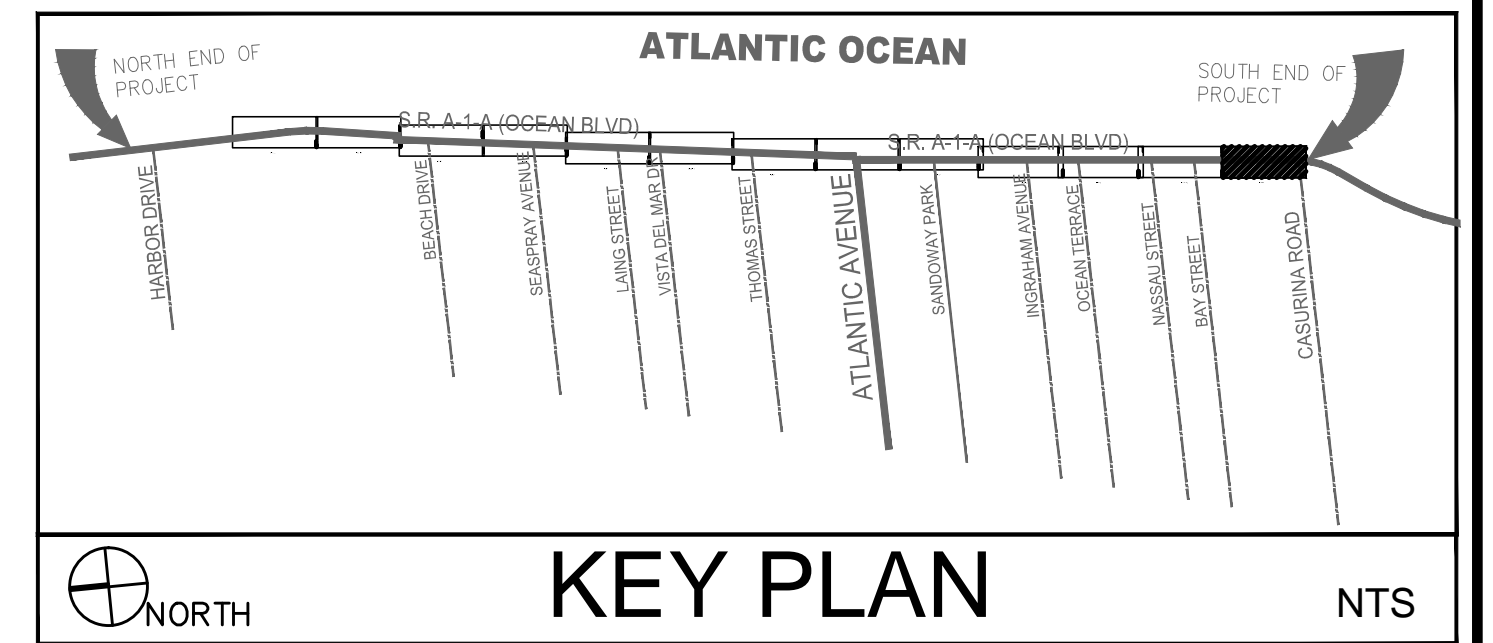


1. ALL PULLBOXES, CONDUITS, PANELS AND LIGHTING CONTROLS ARE EXISTING TO REMAIN AND HAVE BEEN INSTALLED AS PER APPROVED PERMITS IN PHASE 1.

- CITY #:17-1G7161
- FDOT #: 2016-C-496-0020-93060
- DEP #:PB-1209



SCALE: 1"=20'-0"



- ① EXISTING UNDERGROUND CONDUIT. PULL NEW WIRES AS REQUIRED TO POWER POLE LIGHTS AND RECEPTACLES.
- ② PROVIDE GFCI RECEPTACLES AT BASE OF NEW LIGHT POLES. POWER FROM CIRCUIT INDICATED.

The Gantt chart displays the following schedule:

Activity	Start Time (min)	End Time (min)
Activity A	0	10
Activity B	10	20
Activity C	20	40

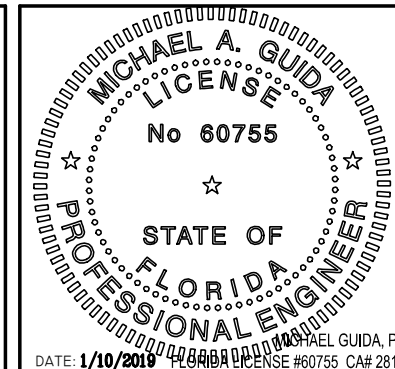


CITY of DELRAY BEACH
ENVIRONMENTAL SERVICES DEPARTMENT
434 SOUTH SWINTON AVENUE, DELRAY BEACH, FLORIDA 33444
Phone: (561) 243-7322 Fax: (561) 243-7060 www.mydelraybeach.com

CIVIL ENGINEER
FLYNN ENGINEERING
241 COMMERCIAL BOULEVARD
LAUDERDALE-BY-THE-SEA, FLORIDA 33308

MECHANICAL, ELECTRICAL, AND PLUMBING
Credo Consulting Engineers
800 E. Broward Boulevard
Suite 601
Fort Lauderdale, Florida 33301

1



<div>DESIGNED BY</div> <div>DRAWN BY</div> <div>CHECKED BY</div> <div></div> <div></div> <div></div> <div>DATE</div>	MG				
	NG,OL				
	MG				
		REV	DATE	DESCRIPTION	

PHASE 2 - ISSUED FOR BID
ELECTRICAL PLANS (PARTIAL 7 OF 7)

Sunshine 811
Always call 811 before you dig.

SHEET NO.
E-107

FILE ID.